



**Annual Continental European
Cochrane Entities Meeting
CECEM
Maastricht, The Netherlands,
June 10-12, 2009**



Welcome

- Hosts:
 - Rob de Bie – Cochrane Rehabilitation and Related Therapies Field
 - Rob Scholten – Dutch Cochrane Centre



WELCOME

Welcome at www.cebp.nl! Our mission is to search, collect and disseminate available scientific evidence in the physiotherapy domain for physiotherapists, health care workers, patients and financiers of health care. This website contains over 2500 whitepapers, all freely available from our database.

UPCOMING CONFERENCES

10-06-2009 - 13-06-2009

Annual Conference and Exposition of the American Physical Therapy Association, Baltimore, Maryland, USA

18-06-2009 - 20-06-2009

5. Physiokongress, Fellbach, Germany

24-06-2009 - 28-06-2009

2nd World Psoriasis and Psoriatic Arthritis Conference 2009, Stockholm, Sweden

19-08-2009 - 22-08-2009

23rd European Conference on Philosophy of Medicine and Healthcare, Tübingen Germany

UPCOMING COURSES

01-07-2007 - 01-07-2009

Short methodology courses

TODAYS NEWS

Peek preview of interactive KNGF guidelines

Posted on: 11-03-2009



Fysiotherapie op universitair nivo

Posted on: 28-11-2008



GUIDELINES & ARTICLES

11-04-2008

Guideline COPD finished!

20-12-2006

Pre-operative chest physiotherapy is effective

11-08-2005

Full text PEDro articles now available

Cochrane entities >

Dutch Cochrane Centre



Welkom

English

Op de website van het DCC

Op deze website vindt u alle informatie over de activiteiten van het Dutch Cochrane Centre. Waar nodig wordt u verwezen naar de website van The Cochrane Collaboration.

Zoekt u Cochrane systematische reviews, ga dan naar een van de volgende links:

1. [Samenvattingen](#) (abstracts) van Cochrane reviews (ook voor niet-medici)
2. Volledige Cochrane reviews (NB: hiervoor hebt u een abonnement nodig): [The Cochrane Library](#)



Cochrane Colloquium
[Singapore, 11-14 October 2009](#)



Past & future colloquia [here](#).

Search

This website

[Advanced](#)

[Tips](#)

Actueel

Cursus Systematische Review

Wegens overweldigende belangstelling moeten we helaas de aanmelding voor deze cursus voor **niet-Cochrane auteurs** tot nader bericht sluiten. Auteurs die een titel bij een Review Group hebben ingediend kunnen zich uiteraard wel aanmelden.

Voor verdere informatie over de cursus, de voorwaarden en een inschrijfformulier zie onder "cursussen en workshops".

[Welkom](#)

[Het Dutch Cochrane Centre](#)

[The Cochrane Library](#)

[Practische informatie voor review auteurs](#)

[Cursussen en workshops](#)

[Checklists en andere downloads](#)

[Links](#)

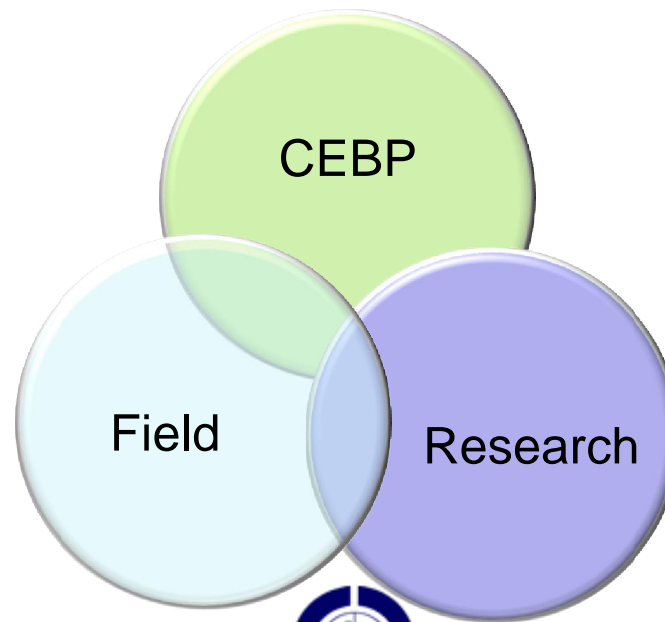
[Veelgestelde vragen](#)

[Staf en contact](#)



Who are we

- Centre for Evidence Based Physiotherapy
- Rehabilitation and Related Therapies Field
- Musculoskeletal Disorders research



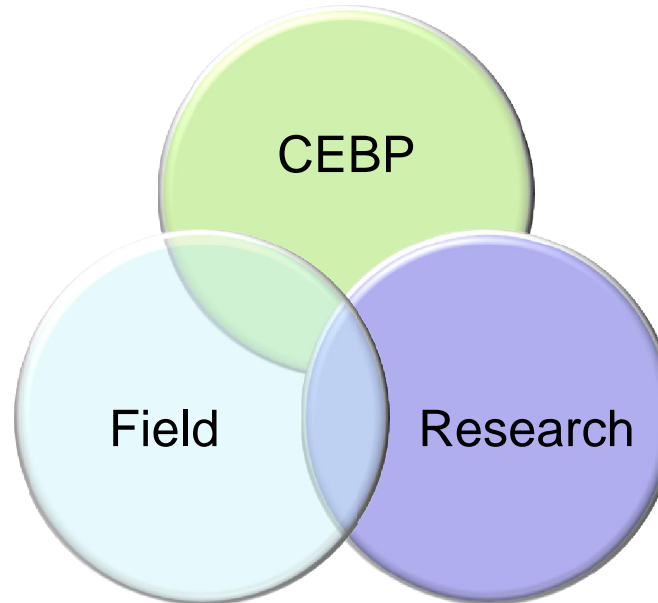
Musculoskeletal Disorders Research





Links to professional bodies e.g. KNGF, WCPT, Guidelines International Network

Cochrane entities,
reviewers, users
Consumers, PeDro



Caphri research
school, research
masters, clinical
research divisions

Evaluation research

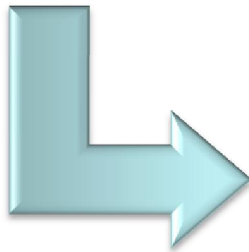
Benchmarking

Implementation
research

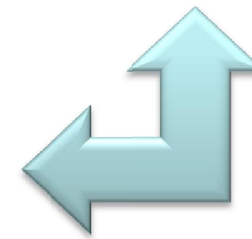


Knowledge base

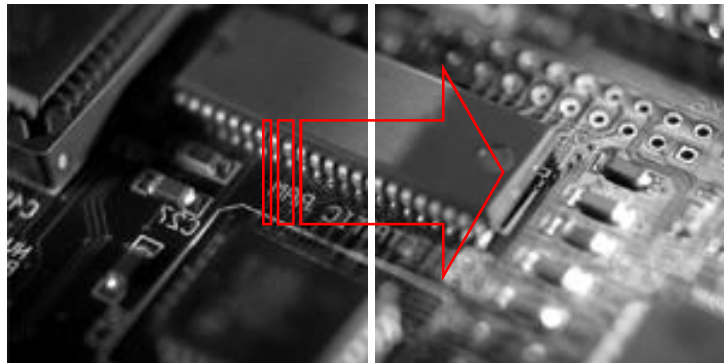
- Cochrane reviews
- Guidelines, PeDro
- Cohorts



Guideline updates,
benchmark research
Indicator research



New up-to-date guidelines



Evidence at your fingertips?



Where are you

- This is Maastricht
- One of the oldest cities in the Netherlands
- Originally a Roman crossing in the river Maas for trade and army routes between France and Germany



You are here!





Universiteit Maastricht



THE COCHRANE
COLLABORATION®



CEBP
Maastricht



Universiteit Maastricht



THE COCHRANE
COLLABORATION®

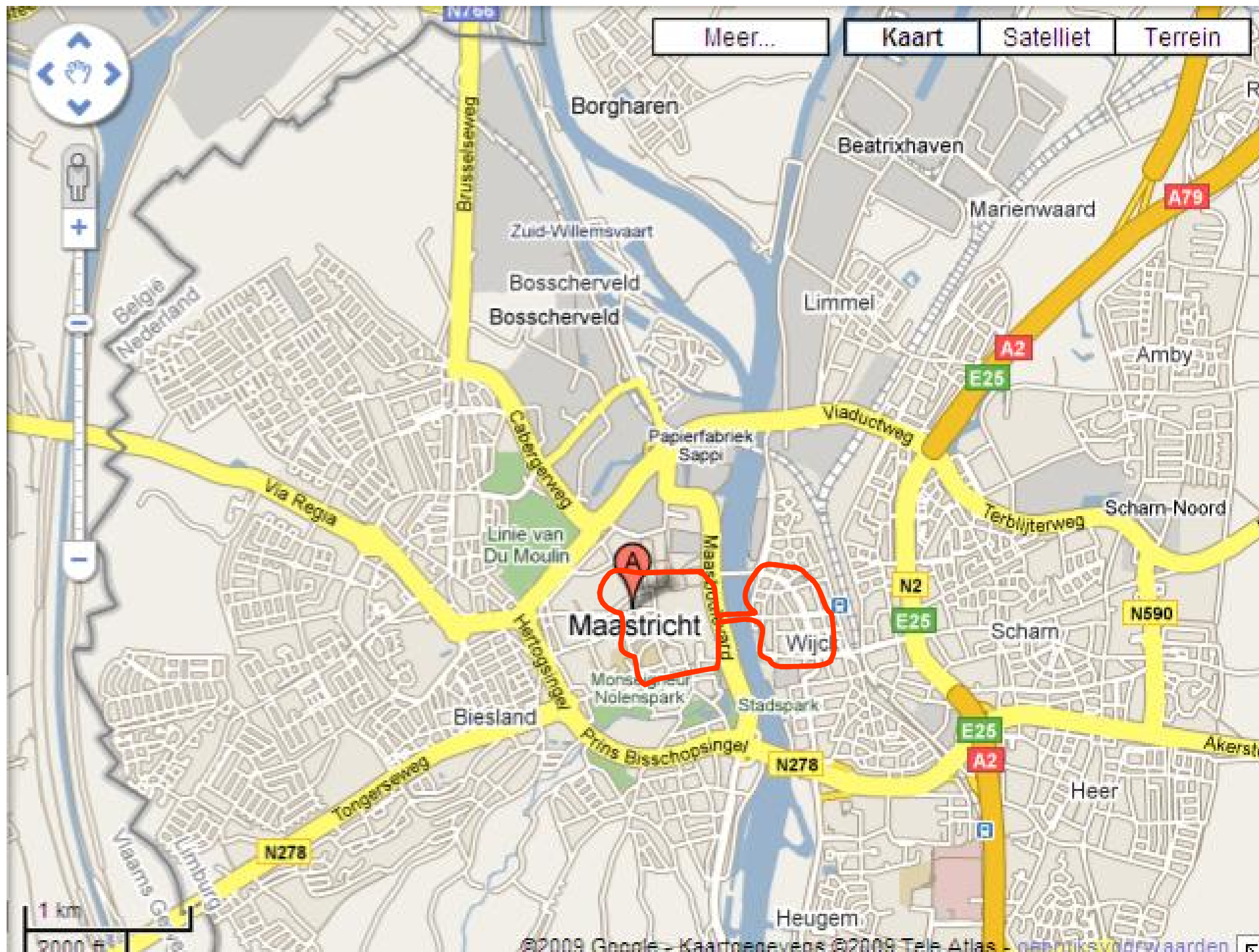


PLAN
of the *CAMP* of
the *ARMY* of the
ALLIES,
commanded by *MONS^r*
D'AUVERQUE, and
the manner in which it was
drawn up in *Battle*,
when the *Army* of the
TWO CROWNS
advanced to
ATTACK IT
May 14.th
1703.

A. B. G. H. I. K. L. M. N. O. P. Q. R. S. T. U. V. W. X. Y. Z.

Scale of half a League





Meer...

Kaart

Satelliet

Terrein

Borgharen

Beatrixhaven

Marienwaard

Zuid-Willemsvaart

Bosscherveld

Bosscherveld

Limmel

Amby

Belgia
Nederland

Cabergeweg

Papierfabriek
Sappi

Viaductweg

Terblijterweg

Scham-Noord

Via Regia

Linie van
Du Moulin

Maastricht
Stad

Maastricht

Wijk

Scham

Monseigneur
Nolenspark

Stadspark

Biesland

Prins Bisschopsingel

N278

E25

A2

Akerste

Heer

N278

Tongerseweg

Heugem

1 km

2000 m



So....

- Take a citywalk tonight
- Discover the city (use your tourist information guide)
- See more of Maastricht tomorrow night at the dinner cruise





Because...

- The rest of the time we are going to be busy
 - Cochrane insider issues
 - Updates on state-of-the-art developments
 - Policy issues
 - Innovations
 - Centre and staff support
 - Meet CC ‘hotshots’



PROGRAM

Wednesday June 10, 2009

Afternoon

- 15.00 – 15.30 Arrival and welcome
Rob de Bie & Rob Scholten
- 15.30 – 16.30 The impact of Cochrane Reviews
keynote address and discussion
*André Knottnerus, Chair of Dutch
Health Council*
- 16.30– 17.00 Diagnostic reviews and
Diagnostic Test Accuracy
Rob Scholten



Eating out

- Steakhouse Evita
- Cantina de Python
- Chinese restaurant China City (guide Michelin)

- 240 restaurants!
- 450 pubs!

Have a great time in Maastricht

